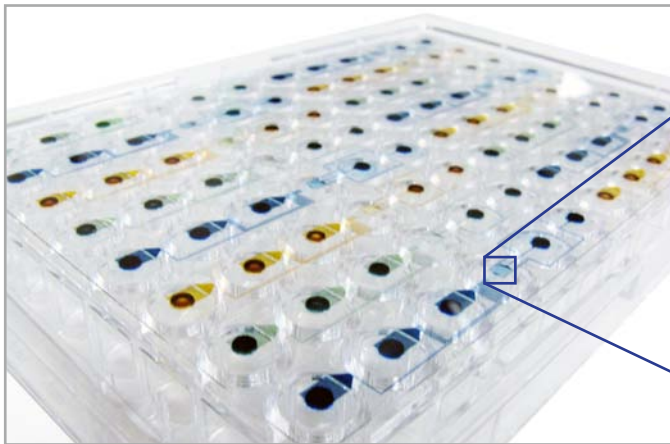


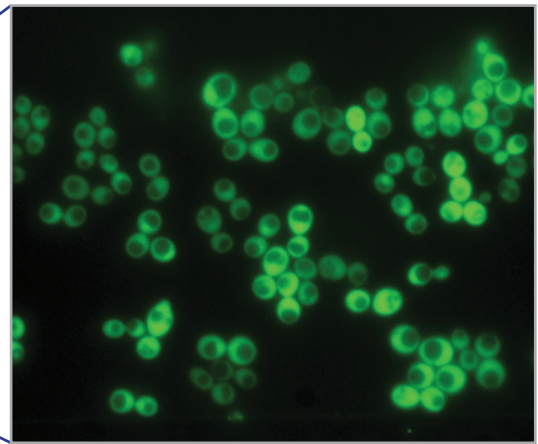
# ONIX™ Microfluidic Perfusion for Yeast Cells

ONIX™ Y Series Microfluidic Experiment Plates are specially designed for time-lapse imaging of yeast. The plates are easy to use, cutting down prep time to under 5 minutes to eliminate the hassles of agar pads and flow cells. The unbeatable combination of a user friendly interface and advanced microfluidic technology make the ONIX the best live cell imaging technology for yeast.

## Unparalleled Cell Culture Quality on Your Microscope

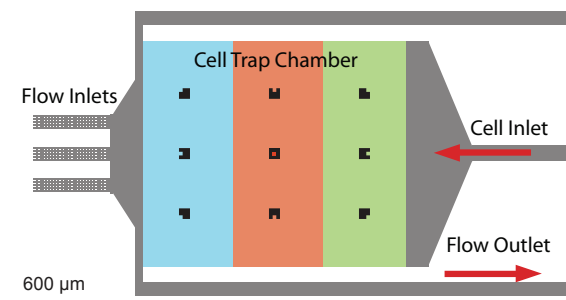


Microfluidic Perfusion Array Plate



Advanced Live Cell Imaging Chamber

## Innovative Microfluidic Design Features

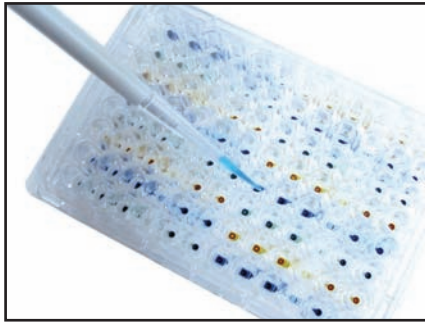


- Yeast cells maintained in a single focal plane
- 16 independent cell culture chambers
- Switch between 3 different solutions per chamber
- Programmable exposure profiles and gradients
- #1.5 glass bottom for optimal imaging quality
- Pipet-friendly 96-well plate format

## Example Applications

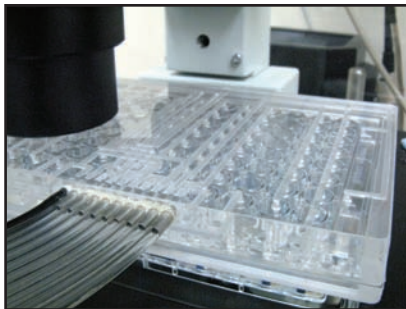
- GFP/CFP/YFP Expression
- Protein Localization
- Nuclear Shuttling
- Time Lapse Movies
- Synthetic Biology
- Cell Cycle Analysis
- Organelle Tracking
- And many more

## 1. Pipet cell samples and media solutions into wells



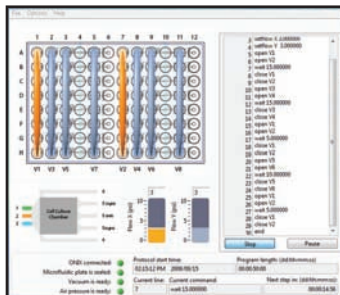
*Independent flow units allow 16 experiments to be run simultaneously. Wells lead to microfluidic channels and culture chambers with a glass coverslip floor*

## 2. Seal manifold to plate and place on microscope



*Easy integration with your current microscope system*

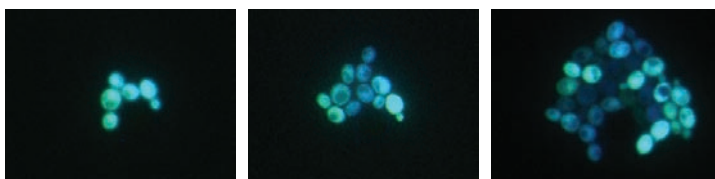
## 3. Program media exposure protocol



*Schedule time-varying flow inputs.*

*The included software interface gives the flexibility to cycle different media solutions and create automated exposure programs.*

## 4. Perfuse and image



*Run programmed flow protocol and begin imaging. Record time-lapse movies without manual supervision.*